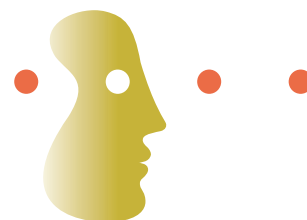


CANTAB Connect Prodromal Alzheimer's



Cognitive Assessment for Prodromal Alzheimer's Clinical Trials

CANTAB Connect Prodromal Alzheimer's is a pharmacologically sensitive cloud-computing assessment system for use in pharmaceutical clinical trials investigating the cognitive profile and efficacy of treatments for Prodromal Alzheimer's disease.

Product overview:

- ✓ Phases I-IV
- ✓ 35 minutes per subject
- ✓ Repeatable assessments
- ✓ Standardized testing
- ✓ Automatic scoring
- ✓ HIPAA compliant data

Measures include:

- Visual Memory
- Episodic memory
- Working memory
- Executive function
- Processing speed
- Sustained Attention

Key features

Touchscreen tests increase precision and ease of use.

Sensitive to disease related cognitive impairment, drug effects and changes over time.

Objective and translational tests that are language-independent and culturally neutral, making them ideal for international studies.

Compliant with global GCP and regulatory standards.

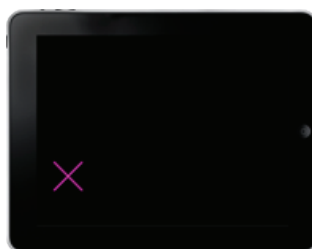
The CANTAB Connect Cloud

Access secure real-time data from global sites anytime, anywhere via the cloud. Automatic scoring and monitoring improve data quality facilitating more informed decision making and accelerating trial completion.



Prodromal Alzheimer's test panel

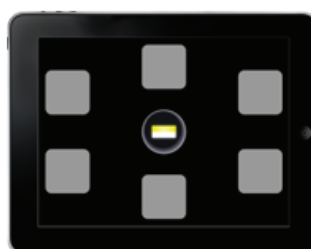
The CANTAB tests in CANTAB Connect Prodromal Alzheimer's are sensitive to experimental manipulation of symptoms, including through pharmacological intervention, allowing researchers to measure behavioural improvements in performance:



Test Familiarization
CANTAB Motor Screening Task (2 mins).



Processing and Psychomotor Speed
CANTAB Reaction Time Task (3 mins).



Visuospatial Episodic Memory
CANTAB Paired Associates Learning Task (8 mins).



Visual Recognition Memory
CANTAB Pattern Recognition Memory Task (4 mins).



Visual Recognition Memory
CANTAB Delayed Matching to Sample Task (7 mins).



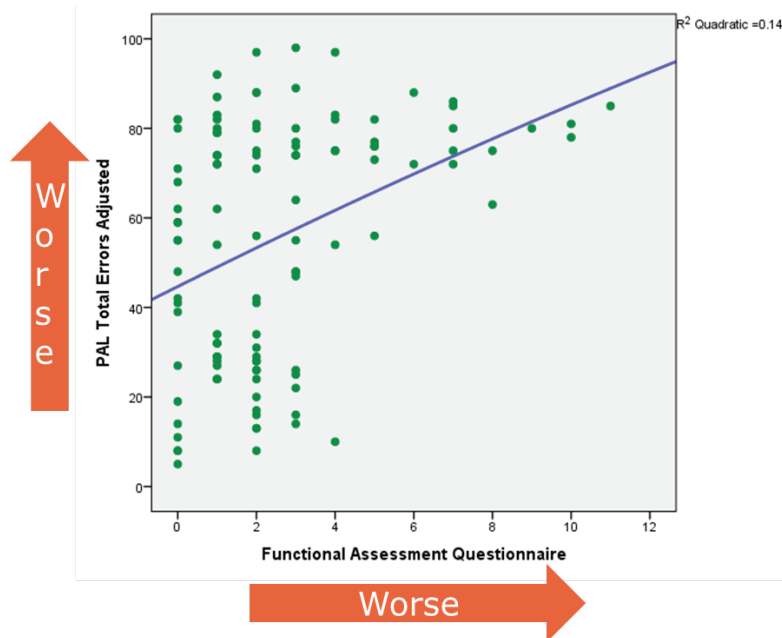
Working Memory
CANTAB Spatial Working Memory Task (4 mins).



Sustained Attention
CANTAB Rapid Visual Information Processing Task (7 mins).

Sensitive to the key cognitive domains known to be impaired in prodromal Alzheimer's disease

Poor performance in memory tasks in prodromal Alzheimer's disease is associated with impaired day-to-day function as measured against the Functional Activities Questionnaire of activities of daily living¹.



1. Unpublished internal data.

Discover the benefits

Increase your chances of success

CANTAB Connect assessments are highly sensitive to pharmacological manipulation, making it possible to demonstrate the cognitive effects of compounds to regulators. CANTAB Connect is also able to detect disease-related impairments and change over time, including early in the disease process, maximizing the likelihood of detecting cognitive efficacy.

Complete trials on time and on budget

CANTAB Connect studies can be set up rapidly and require minimal rater training due to the automated and consistent computerized test delivery. Data from remote sites is securely captured, scored and stored in a private cloud for real-time monitoring of study progress. Staff training, study management and data interpretation services are available to ensure successful trial completion.

Make informed decisions faster

CANTAB Connect automatically cleans captured data, flagging up any errors to increase study quality and data validity. The reliability of data captured through the regulatory approved software reduces risks, saves costs and accelerates informed decision making throughout clinical development.

Rely on CANTAB expertise

USED TO ASSESS
over 30
therapeutic areas

IN OVER
80
countries

TESTING IN
160
clinical trials



CANTAB customers report 100% satisfaction with our study management and clinical trial support services.

www.cantab.com
info@cantab.com