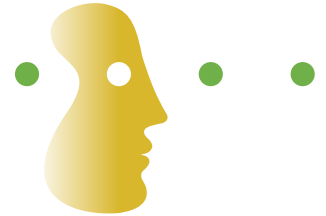


# CANTAB Connect Research Depression



## Cognitive assessment for studies of Depression

CANTAB Connect Research Depression is a precise, validated and objective cloud-based cognitive assessment and data collection system for studies researching depression.

<p><b>Product overview:</b></p> <ul style="list-style-type: none"> <li>✓ Under 35 minutes per subject</li> <li>✓ Repeatable assessments</li> <li>✓ Standardized testing</li> <li>✓ Automatic scoring</li> </ul>	<p><b>Measures include:</b></p> <ul style="list-style-type: none"> <li>• Sustained attention</li> <li>• Visual memory</li> <li>• Working memory</li> <li>• Planning</li> <li>• Emotion recognition</li> </ul>	<p><b>Key features</b></p> <p><i>Touchscreen</i> tests increase precision and ease of use.</p> <p><i>Highly sensitive</i> to cognitive impairment, drug effects and changes over time.</p> <p><i>Objective and translational</i> tests that are language-independent and culturally neutral, making them ideal for international studies.</p> <p><i>Adaptive test versions</i> for patients and healthy volunteers.</p>
<p><b>The CANTAB Connect Cloud</b></p> <p>Access secure real-time data from multiple testing devices and sessions anytime, anywhere via the cloud. Automatic data scoring and monitoring improves quality and efficiency.</p>		

### Depression test panel

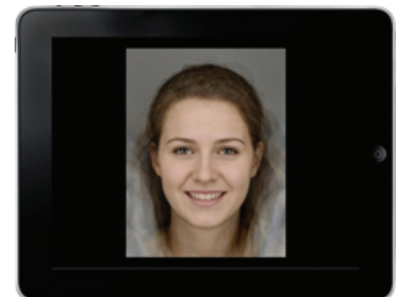
The CANTAB tests in the depression battery are sensitive to experimental manipulation of symptoms, including pharmacological intervention, allowing researchers to measure behavioural improvements in performance:



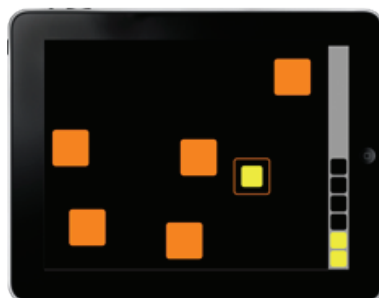
**Planning**  
CANTAB One Touch  
Stockings of Cambridge  
Task (10 mins).



**Attention and Visual Memory**  
CANTAB Delayed Matching to  
Sample Task (7 mins).



**Emotion Recognition**  
CANTAB Emotion Recognition  
Task (6 mins).



**Working Memory**  
CANTAB Spatial Working  
Memory Task (4 mins).

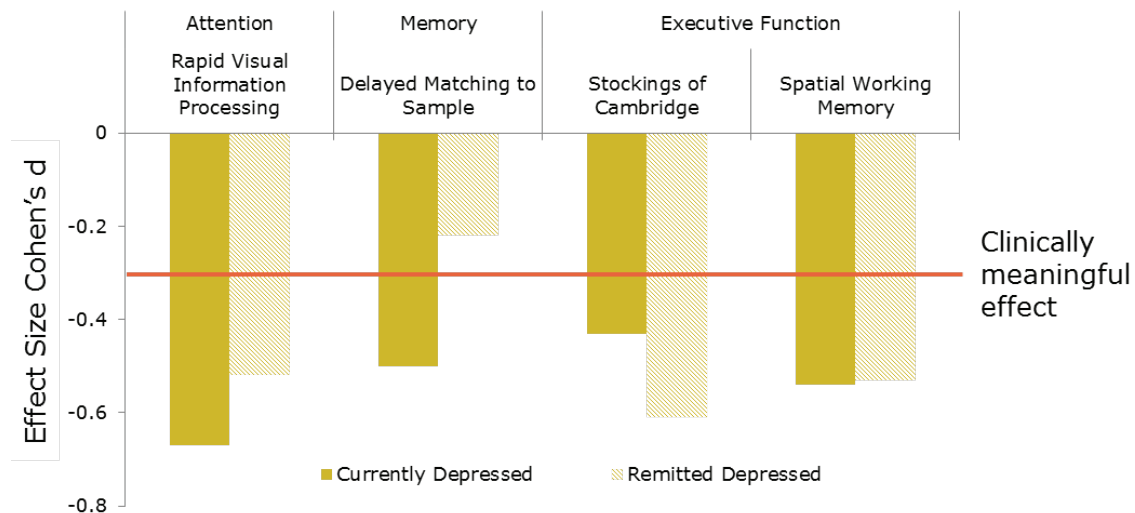


**Sustained Attention**  
CANTAB Rapid Visual Information  
Processing Task (7 mins).



## Sensitive to the key cognitive domains impaired in depression

Moderate impairments in sustained attention, memory and executive function are observed in depression which do not recover after treatment or remission of mood symptoms.<sup>1</sup> Effect sizes of 0.3 or greater (Cohen's d) are considered to be clinically relevant.



1. Rock, P.L., Roiser, J.P., Riedel, W.J. & Blackwell, A.D., (2014). Cognitive impairment in depression: a systematic review and meta-analysis. *Psychological Medicine*, 44, 2029-40

## Discover the benefits

### Increase the impact of your studies

CANTAB Connect enables researchers to objectively measure cognitive performance linked to specific neural networks. The assessments have proven sensitivity to disease-related impairment and change over time caused by biological and environmental factors, giving your research added credibility, validity and impact.

### Save time and costs

CANTAB studies are easy to set up and quick to administer. Assessments can be conducted without formal training and data is instantly captured, scored and stored in a private cloud for real-time monitoring of your study's progress.

### Perform research you can rely on

CANTAB is used in academia, healthcare and pharmaceutical clinical trials as the gold standard in neuropsychological measurement. The tests are reported in over 1,800 peer-reviewed papers which have been cited over 100,000 times.

## Rely on CANTAB expertise

USED TO RESEARCH  
**over 100 disorders**

IN MORE THAN  
**80 countries**

TESTING IN  
**800+ universities**



### Customer satisfaction

"We require cognitive measures that are reliable, well validated and easy to administer. CANTAB is the obvious choice."

Institute of Psychiatry, King's College London, UK.

[www.cantab.com](http://www.cantab.com)  
[info@cantab.com](mailto:info@cantab.com)