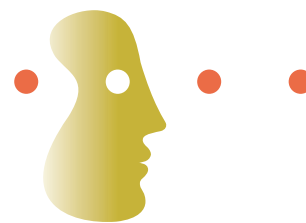


# CANTAB Connect Schizophrenia



## Cognitive Assessment for Schizophrenia Clinical Trials

CANTAB Connect Schizophrenia is a pharmacologically sensitive cloud-computing assessment system for use in pharmaceutical clinical trials investigating the cognitive profile and efficacy of treatments for Schizophrenia.

### Product overview:

- ✓ Phases I-IV
- ✓ Under 1 hour per subject
- ✓ Repeatable assessments
- ✓ Standardized testing
- ✓ Automatic scoring
- ✓ HIPAA compliant data

### Measures include:

- Working memory
- Episodic memory
- Executive function
- Emotion recognition
- Verbal memory
- Processing speed
- Sustained attention

### Key features

*Touchscreen* tests increase precision and ease of use.

*Sensitive* to disease related cognitive impairment, drug effects and changes over time.

*Objective and translational* tests that are language-independent and culturally neutral, ideal in multi-national studies.

*Compliant* with global GCP and regulatory standards.

### The CANTAB Connect Cloud

Access secure real-time data from global sites anytime, anywhere via the cloud. Automatic scoring and monitoring improve data quality, facilitating more informed decision making and accelerating trial completion.

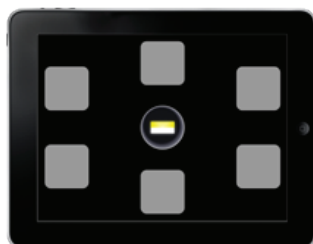


## Schizophrenia test panel

The CANTAB tests in CANTAB Connect Schizophrenia are sensitive to experimental manipulation of symptoms, including through pharmacological intervention, allowing researchers to measure behavioural improvements in performance:



**Processing and Psychomotor Speed**  
CANTAB Reaction Time Task (3 mins).



**Visuospatial Episodic Memory**  
CANTAB Paired Associates Learning Task (8 mins).



**Multitasking**  
CANTAB Multitasking Test (8 mins).



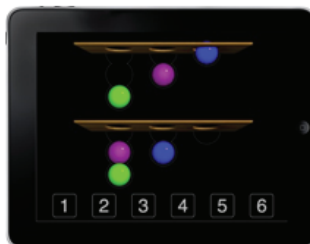
**Sustained Attention**  
CANTAB Rapid Visual Information Processing Task (7 mins).



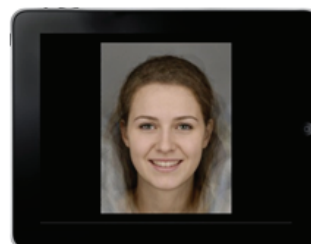
**Working Memory**  
CANTAB Spatial Working Memory Task (4 mins).



**Verbal Recognition Memory**  
CANTAB Verbal Recognition Memory Task (10 mins).



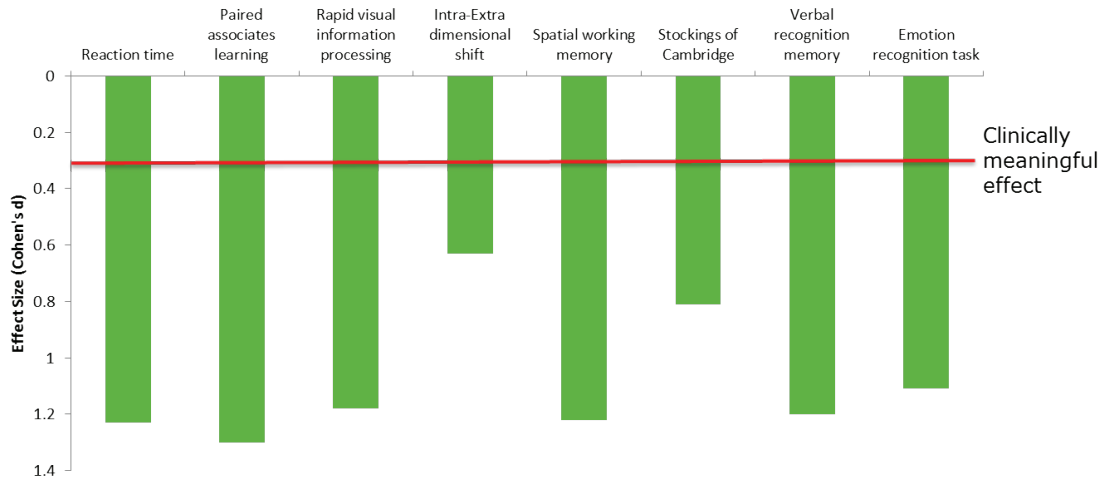
**Planning**  
CANTAB One Touch Stockings of Cambridge Task (10 mins).



**Emotion Recognition**  
CANTAB Emotion Recognition Task (6 mins).

## Sensitive to the cognitive domains impaired in Schizophrenia

Psychomotor function, sustained attention, memory and executive function are key domains impaired in schizophrenia. Effect sizes of 0.3 or greater (Cohen's d) are considered to be clinically relevant, effect sizes estimated.<sup>1</sup>



1. Unpublished internal data

## Discover the benefits

### Increase your chances of success

CANTAB Connect assessments are able to sensitively detect cognitive impairment, change over time and functional improvements in patients with schizophrenia. The tests are highly sensitive to pharmacological manipulation, making it possible to demonstrate the efficacious cognitive effects of compounds to regulators.

### Complete trials on time and on budget

CANTAB Connect studies can be set up rapidly and require minimal rater training due to the automated and consistent computerized test delivery. Data from remote sites is securely captured, scored and stored in a private cloud for real-time monitoring of study progress. Staff training, study management and data interpretation services are available to ensure successful trial completion.

### Make informed decisions faster

CANTAB Connect automatically cleans captured data, flagging up any errors to increase study quality and data validity. The reliability of data captured through the regulatory-approved CANTAB Connect software reduces risks, saves costs and accelerates informed decision making throughout clinical development.

## Rely on CANTAB expertise

USED TO ASSESS  
**over 30**  
therapeutic areas

IN OVER  
**80**  
countries

TESTING IN  
**160**  
clinical trials



CANTAB customers report 100% satisfaction with our study management and clinical trial support services.

[www.cantab.com](http://www.cantab.com)  
[info@cantab.com](mailto:info@cantab.com)